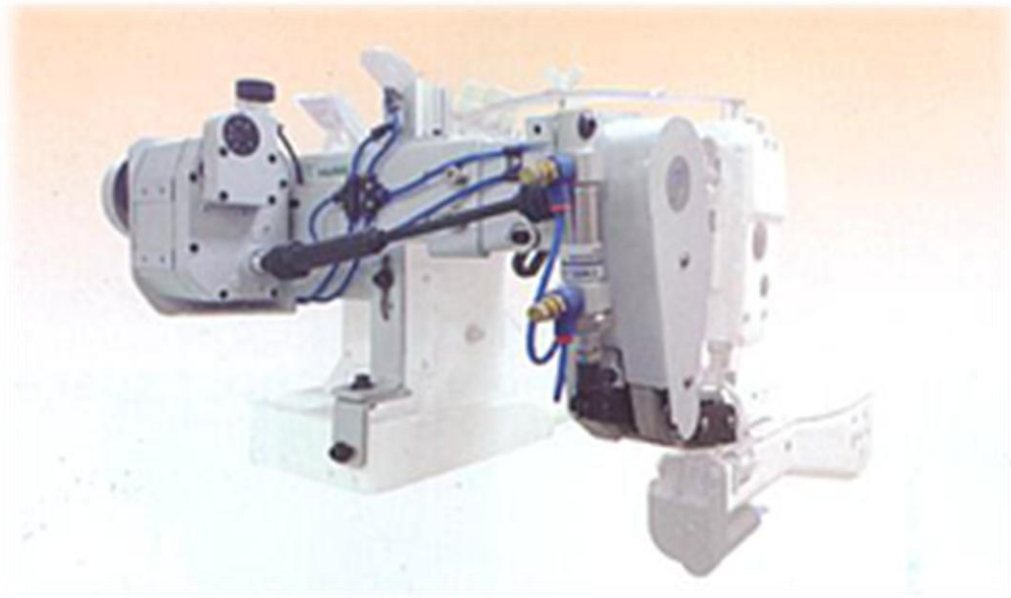




HPF-HB/AF 厚物,極厚物用皮帶
式拖輪安裝手冊
THE INSTRUCTION GUIDE
BOOK FOR HPF-HB/AF PULLER



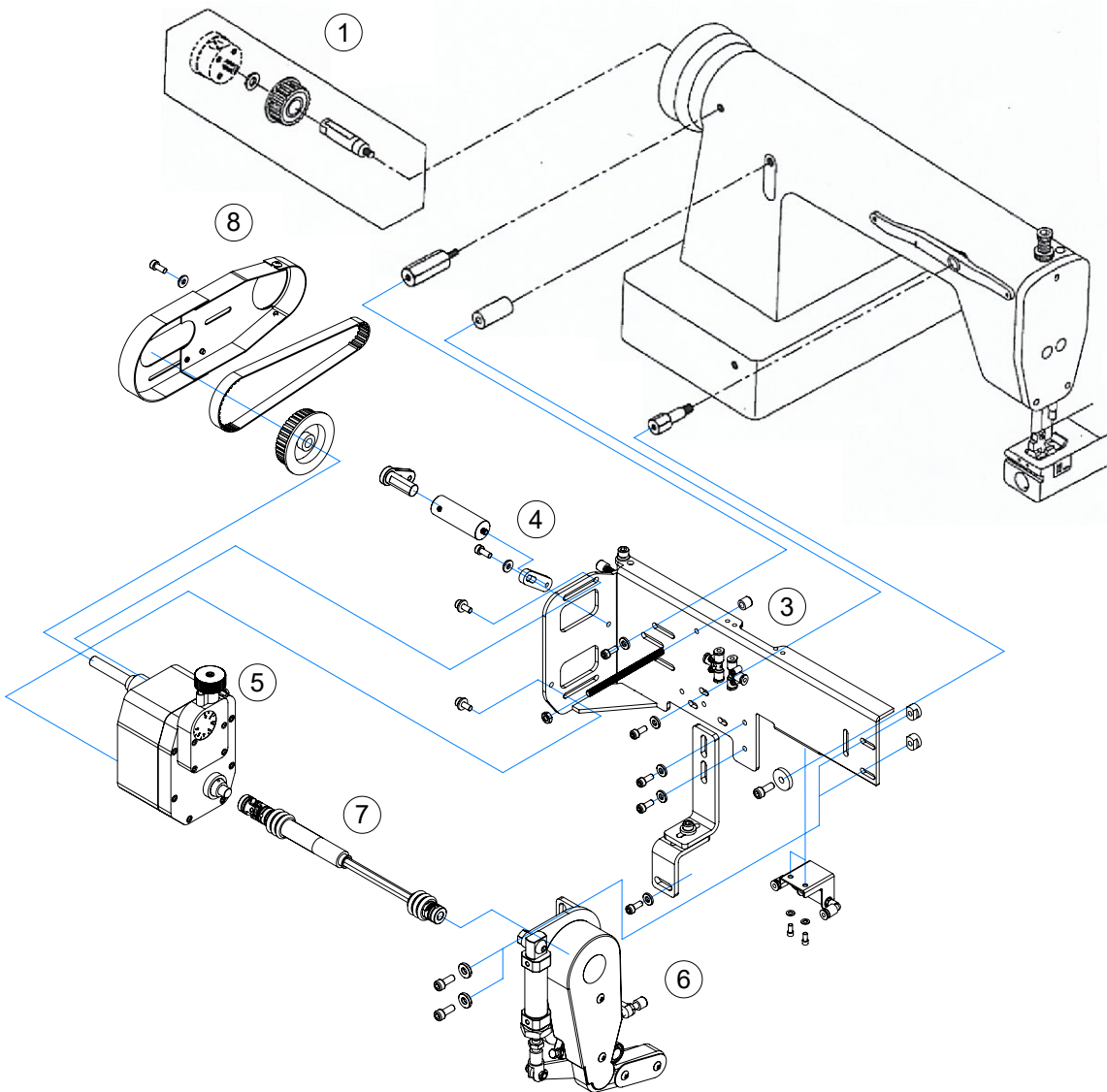
安裝前,請詳細閱讀安裝說明書

PLEASE READ INSTRUCTIONS & ASSOCIATED DRAWINGS BEFORE INSTALLATION

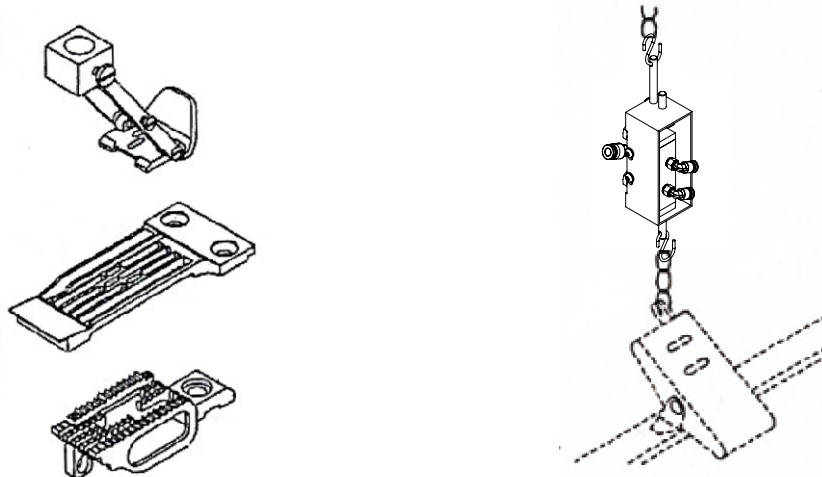
HPF-HB/AF 組合圖 THE COMBINATION OF HPF-HB/AF

請依編號順序組合

Please assemble the device according to the indicated numbers.

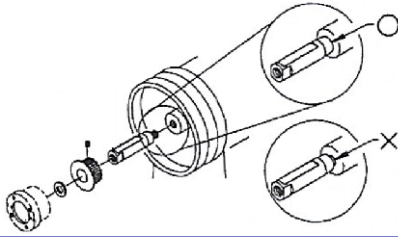


- ② HPF-HB 專用針距組
(1/8"X2)
Gauge set (1/8"X2)
for HPF-HB



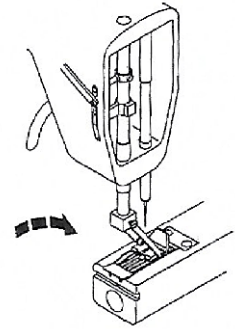
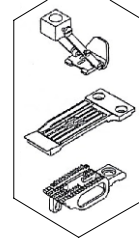
① 皮帶輪螺柱
Stud for pulley

注意!! 螺柱必需與針車軸心確實上緊, 使接觸面緊密, 不得有間隙(如下圖), 否則螺柱與針車軸心的螺牙均會損壞
Note!! Puller stud must be tighten definitely with machine pulley, touching side must be close without gap as below drawing, Oterwise, the tread of pulley stud and machine pulley will be damaged.



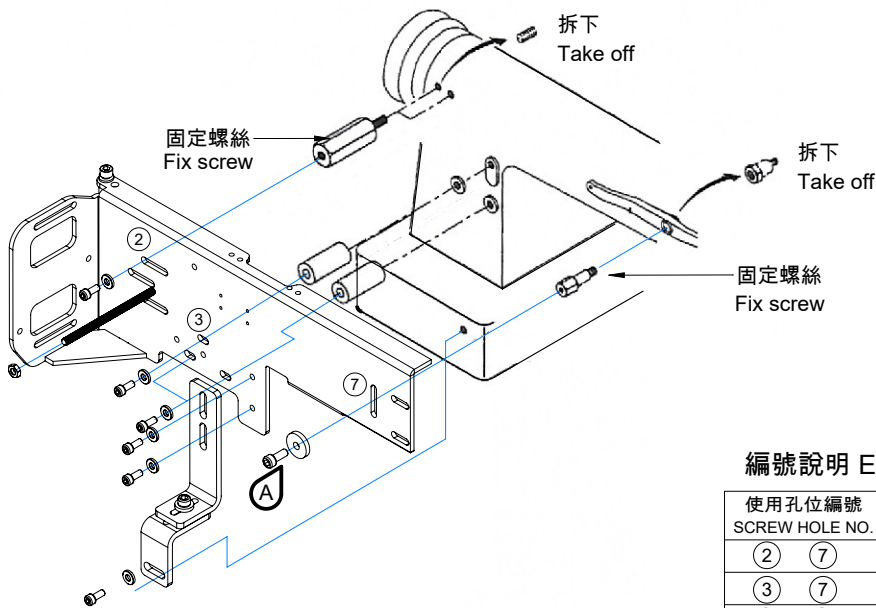
② 更換HPF-HB 專用針距組(1/8"X2)
Change to gauge set (1/8"X2) for HPF-HB

HPF-HB 專用針距組
(1/8"X2)
Gauge set (1/8"X2)
for HPF-HB



③ 固定變速機架
Fixing transmission bracket

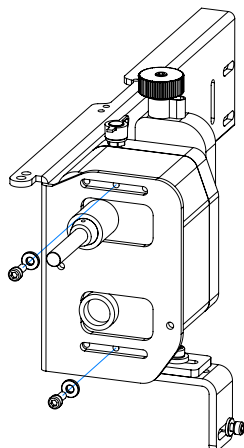
需優先安裝 A 螺絲後, 再依下列機型編號固定其他螺絲
Must install the screw A at first, then fix other screws accrding the below model numbers.



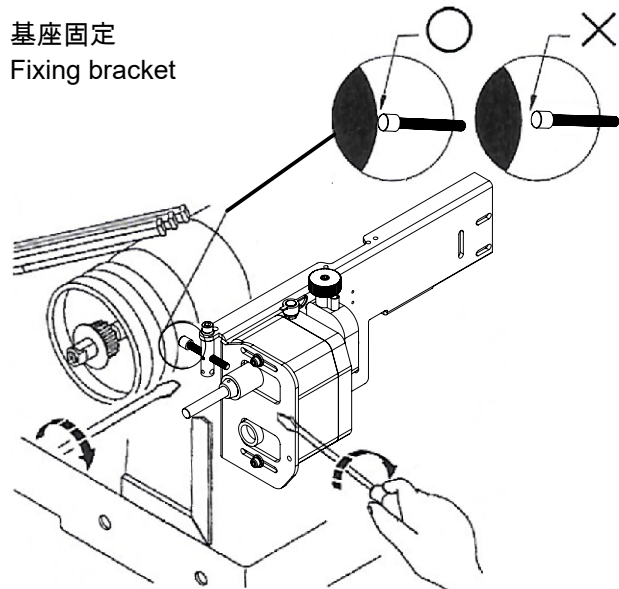
編號說明 Explanation of Numbers

使用孔位編號 SCREW HOLE NO.	廠牌 BRAND	機型 MODELS
② ⑦	JUKI	
③ ⑦	JUKI	
② ⑦	BROTHER	
③ ⑦	BROTHER	
② ⑦	BROTHER	
③ ⑦	BROTHER	

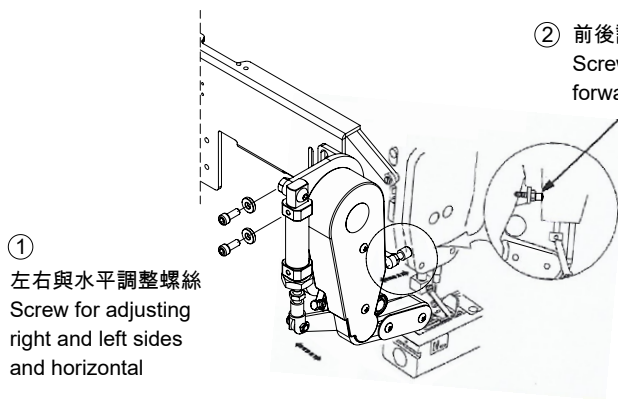
④ 安裝變速機
Installing transmission



⑤ 基座固定
Fixing bracket



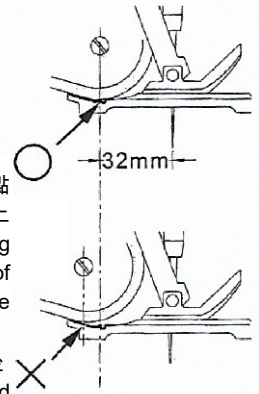
⑥ 拉布皮帶各方向位置調整
Adjustment for position of pulling belt



① 左右與水平調整螺絲
Screw for adjusting right and left sides and horizontal

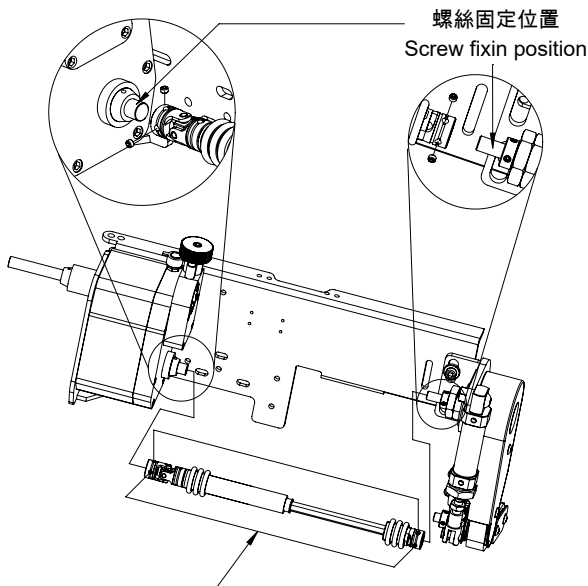
② 前後調整螺絲
Screw for adjusting forward and backward

重要:皮帶與針板的接觸點是在針板的齒狀上
Important: The touching point of belt is on teeth of needle plate



接觸點偏後
Touching point is over backward

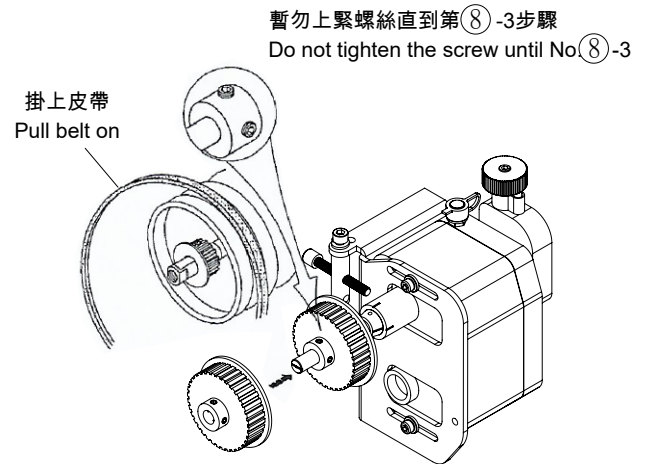
⑦ 安裝萬向接頭
Fixing universal joint



螺絲固定位置
Screw fixation position

重要!
安裝萬向接頭時,兩頭螺絲須成一直線,否則快慢不均
Note! Keep the screw of all universal joints in perfect alignment to eliminate uneven motion.

⑧-1 固定皮帶輪
Fixing connecting stud

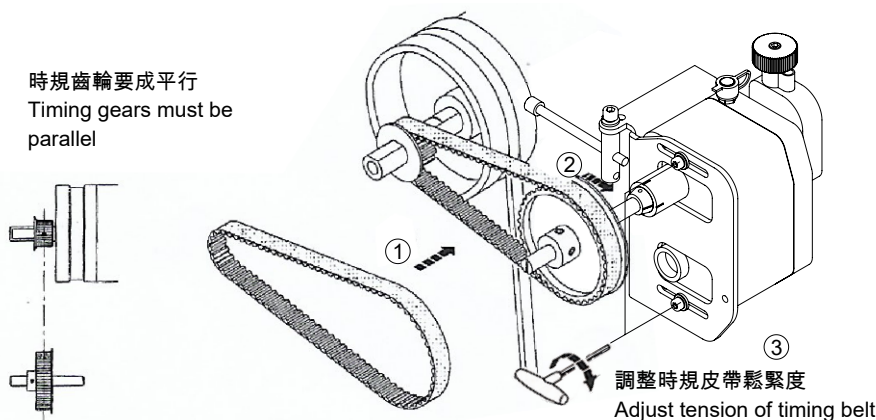


暫勿上緊螺絲直到第⑧-3步驟
Do not tighten the screw until No.⑧-3

掛上皮帶
Pull belt on

套上變速機入力軸皮帶齒輪
Put gear into transmission's input shaft

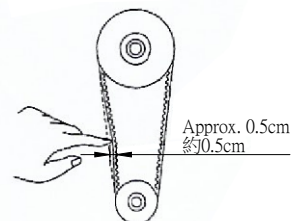
⑧-2 安裝皮帶
Installing timing belt



時規齒輪要成平行
Timing gears must be parallel

調整時規皮帶鬆緊度
Adjust tension of timing belt

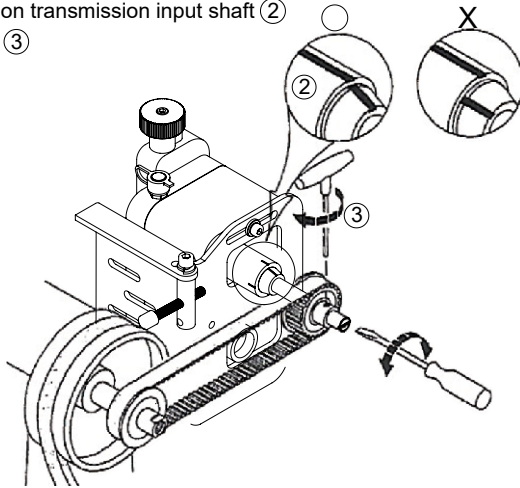
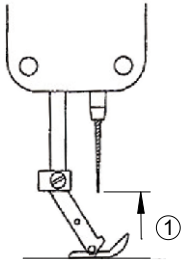
皮帶鬆緊度參考圖
Reference for belt tension



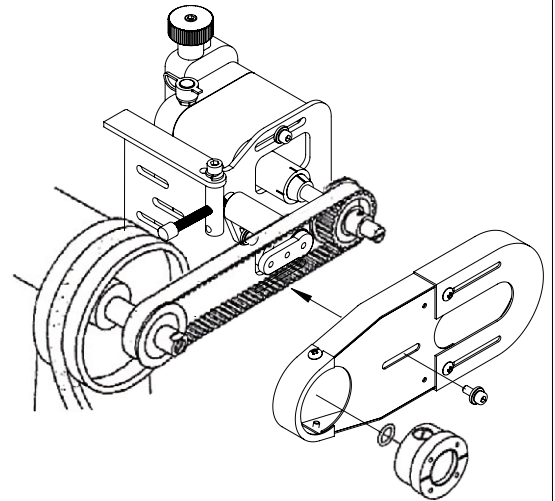
⑧-3 變速機入力軸定位
Adjust transmisson's input shaft position

變速機的红線對齊入力軸紅線②後,上緊時規齒輪螺絲③
Meet the both red line on transmission input shaft ②
tighten the timing gear ③

針車提升至最高點
Needle to the toppest position



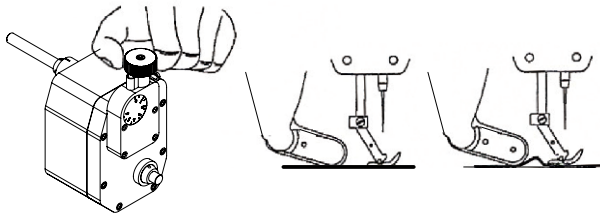
⑧-4 安裝皮帶護蓋
Installing belt cover



調整 ADJUSTMENT

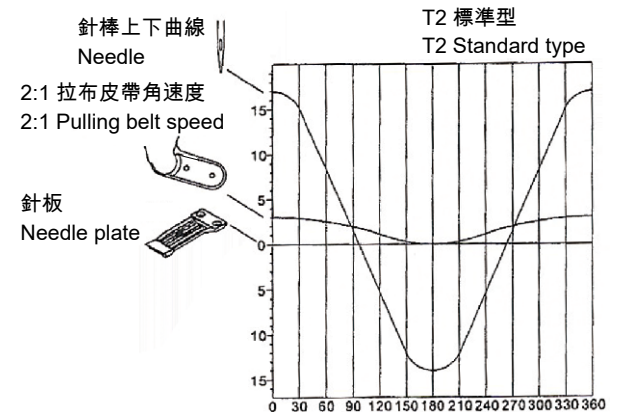
圖一 Figure 1

拉布皮帶的動作量應比送齒稍大,但差率太多時,拉布皮帶則易磨損
The pulling belt's feeding amount should be properly larger than feed dog's to procure even effect on sewn material, if it is overmuch, pulling belt will be torn easily.



圖二 Figure 2

拉布皮帶角速度圖
Pulling belt speed



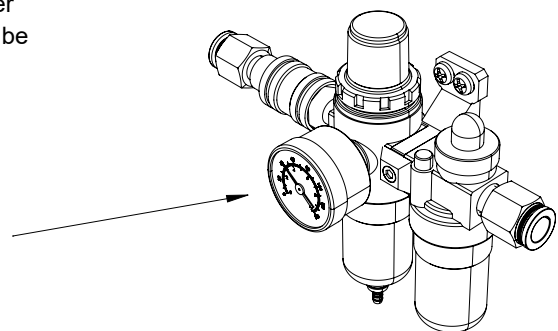
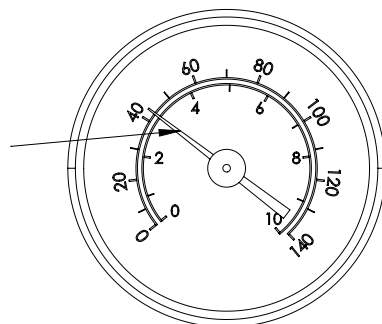
圖三 Figure 3

適當的空氣壓力最高是5公斤
The maximum proper air pressure is 5Kgf/cm²

空氣壓力調整愈高拉布的力量就愈大,縫製就愈順暢,產能也會愈高,因此皮帶受力愈大,就愈容易磨損

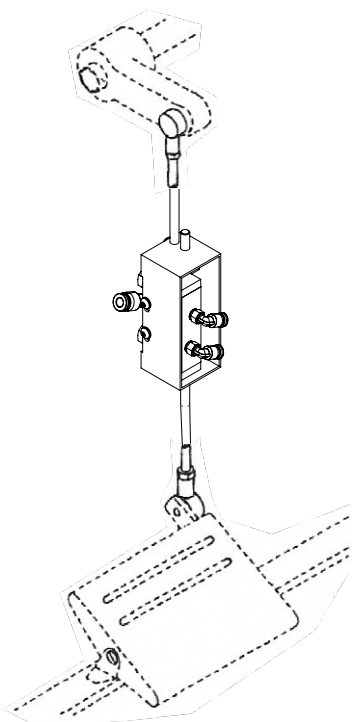
The higher air pressure, the stronger pulling power and higher production efficiency, but the belt will suffer more strength to be torn easily.

拖輪壓力
Puller pressure
最高:5Kgf/cm²
MAX:5Kgf/cm²

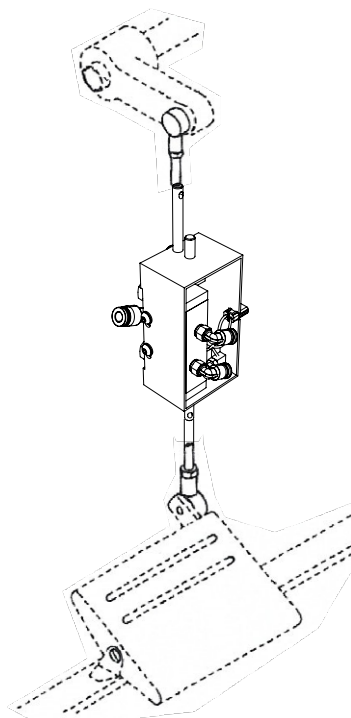


腳踏開關 (選擇性配件)
Pedal switch (Optional parts)

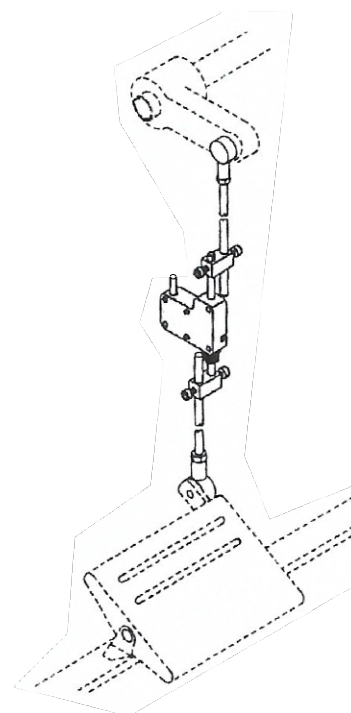
HPF-HB / AF



PCV / AF



PCV

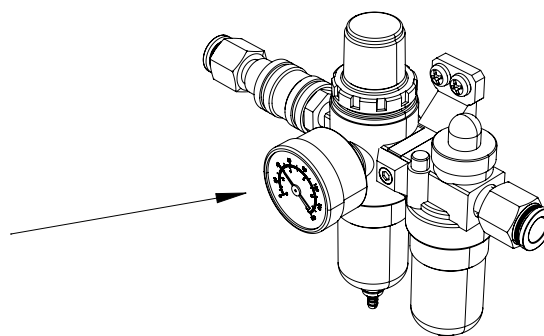
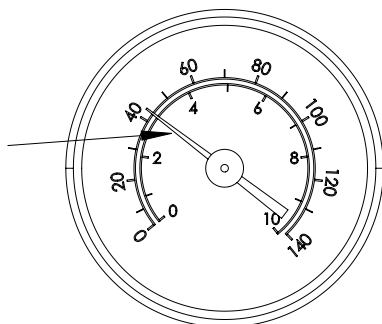


調整 Adjustment

適當的空氣壓力最高是5公斤
The maximum proper air pressure is 5Kgf/cm²

壓力調整愈高,送齒就愈容易磨損
The higher air pressure, the feed dog will be worn easier.

壓腳壓力
Pesser foot pressure
最高:5Kgf/cm²
MAX:5Kgf/cm²



HPF-HB/AF 零件圖 PARTS LIST FO HPF-HB/AF

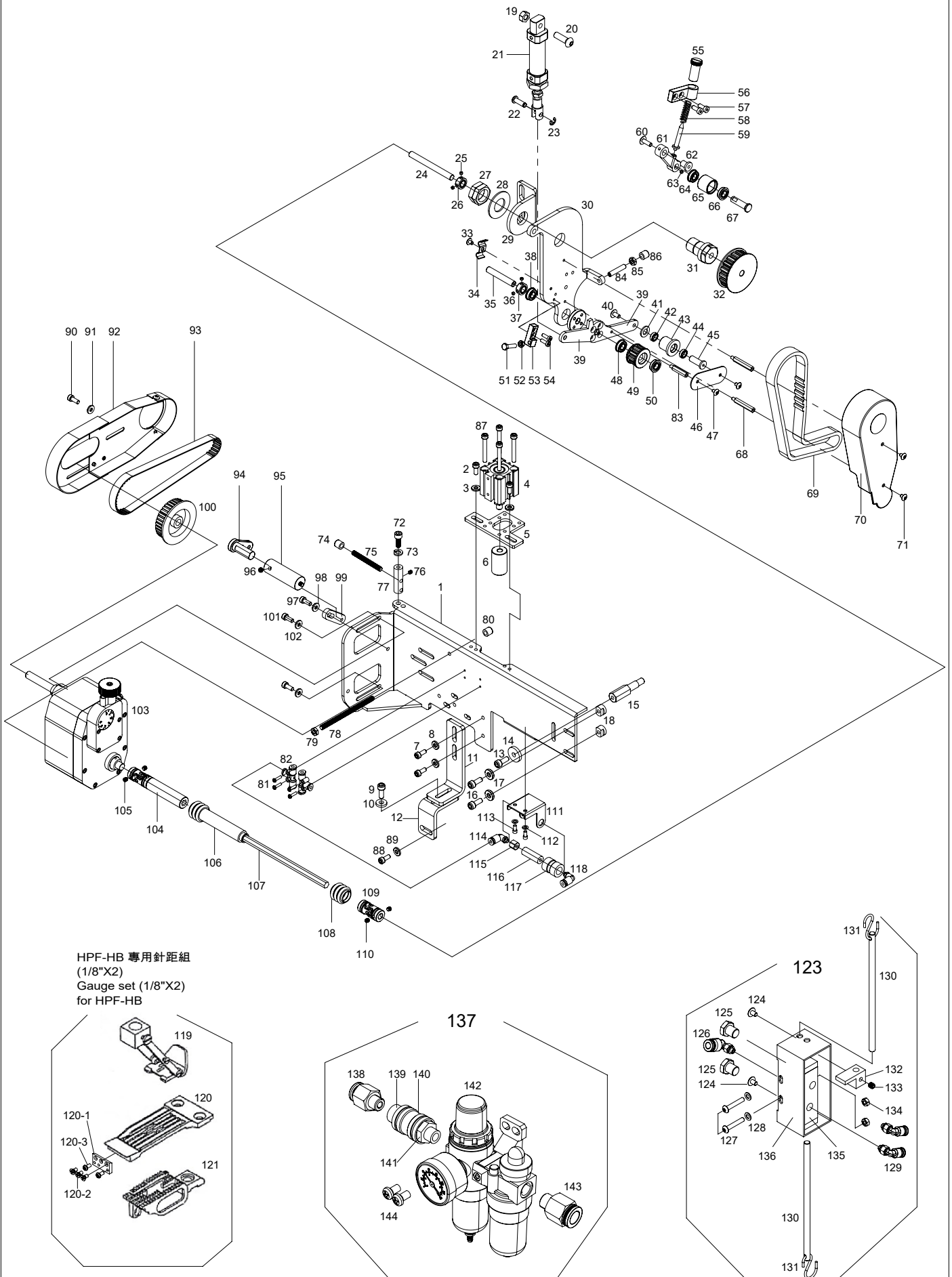
記號說明:
Mark description:



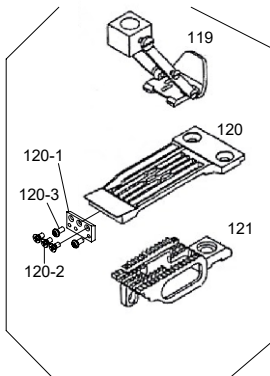
: 選擇性配件,請告知針車廠牌機型
Please indicate sewing machine model No.



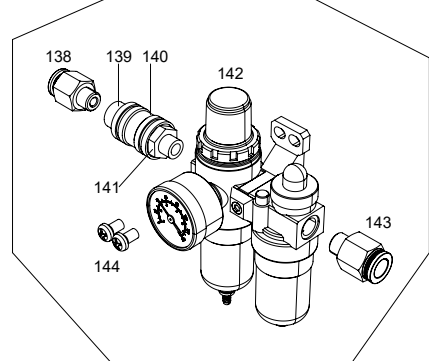
選擇性配件
Option parts



HPF-HB 專用針距組
(1/8"X2)
Gauge set (1/8"X2)
for HPF-HB



137



123

